

# SPARKS & REMARKS

VOLUME 18, ISSUE 1

JUNE 2025



## MASSIVE LIFT GATES FABRICATED AND SHIPPED FROM OUR TAMPA PORT FACILITY

At the close of 2024, PB was in the process of fabricating two, 440,000 lbs. lift gates. These sizeable gates, measuring 150' long and 40' tall, received a three-coat paint system and were shipped by hopper barge in early 2025, from our port facility. The pictures highlight our shipping and transport capabilities.

Transport from our main facility to the berth took less than one hour of travel time, and the loading was done in a two-crane lift. PB completed delivery to site, and our customer installed these lift gates for operational use.

**Success for Our Customers, Our Employees & Our Company**

12781 US Highway 41 South, Gibsonton, FL 33534 • 813-241-4261 • [www.precisionbuild.com](http://www.precisionbuild.com)

---

# LETTER FROM THE CEO

---

Precision Build is growing! With the acquisition of Tampa Steel Erecting Company (TSEC) earlier this year, Precision Build has expanded our capabilities and capacity in providing comprehensive steel fabrication services for our customers in the bridge market. We are helping grow America's infrastructure as well! At all our facilities in Tampa, we have bridge fabrication projects for moveable and fixed span bridges in process. Several of these projects were funded, in part, by the Infrastructure Investment and Jobs Act and will be installed across the Eastern United States from Connecticut in the North to Florida in the South.

TSEC has a rich history of delivering high-quality steel structures for a variety

of markets. The acquisition of TSEC aligns with Precision Build's strategy to expand our portfolio and position in the steel industry. The addition of TSEC's expertise in steel bridges, particularly tub girders, complements Precision Build's existing capabilities and enhances our ability to serve both domestic and international markets. On page 5, you can see the facility and learn about some of their iconic projects.

By combining TSEC's specialized expertise with Precision Build's resources, the merged entity can undertake more complex and large-scale projects, ranging from intricate steel bridges to expansive industrial facilities. This expansion enhances precision. We are really excited to add the expertise of TSEC's workforce to our team as we build a center for fabrication excellence in the Tampa Bay area. Locally, the acquisition signifies a continued commitment to local industry growth and job creation. The integration of TSEC into Precision



*Corey Yraguen,  
CEO of Precision Build*

Build ensures that the company's legacy of community involvement and quality craftsmanship endures. Bob Clark's commitment to remain with the company underscores his dedication to preserving the values that have made TSEC a cornerstone of the community. For all our fabrication businesses, we will continue to add new equipment and techniques that improve quality and productivity to help us better support our customers. We want to stay on the forefront of technology that can make us more efficient, so we can provide the best value solutions for our customers.

We are also growing our field erected tank business! With projects underway

in South America, Central America, the Caribbean, and North America, we are providing tank maintenance and construction for a wide geographic area. We are expanding our team and have added additional leaders and team members with experience in pressure vessels, spheres, cryogenic, and double wall tank construction. We are growing our capacity to serve our customers in design and construction of anhydrous ammonia, LPG, and liquid O2 and N2 tanks. We anticipate more expansion for alternative energy products and are prepared to support our customers with all their storage needs.

Thank you to all our team members for making safety and quality our first and second priorities while we work efficiently! Please keep striving for excellence in all we do!

Corey Yraguen,  
CEO

*"We are what we repeatedly do. Excellence, then, is not an act, but a habit."*

– Aristotle.



---

# SUCCESSFUL FABRICATION AND DELIVERY OF A 1.2 MILLION POUND RAIL ROAD BRIDGE

---



PB completed fabrication, coatings, and delivery of a 120' long x 40' wide railroad bridge to the Northeast United States. This 1.2-million-pound bridge was fully assembled in our Tampa Port facility, then knocked down and shipped by barge to site.

---

## BRIDGE LIFT SPAN FABRICATION AND ASSEMBLY WILL KEEP TAMPA FACILITY BUSY FOR THE NEXT 18 MONTHS

---

PB is excited to share that we have started a major new project which will require more than 7 million lbs. of steel fabrication. Our scope of work on this lift span bridge consists of two towers, the counterweight boxes, and the jump span portion of the bridge. This project will be a staple in our Tampa facilities for the next 18 months. We are currently nearing completion of the counterweight boxes and starting the first partial assemblies of the tower sections.



---

# INTERNATIONAL NEWS

---

## INSTALLING MARINE LOADING ARMS ON AN OPERATIONAL SEA ISLAND

In 2023, PB was contracted to repair the extensive damages hurricane Dorian inflicted at our customer's marine fuel storage facility in Grand Bahama. The scope of work required the removal of eight existing marine loading arms in an open sea berthing platform near the terminal. Because the terminal needed to remain operational, two of the existing loading arms had to be repaired.

Despite on-going operations, including constant ship arrivals and adverse weather conditions, PB successfully executed the removal, repair, and subsequent installation of the eight marine loading arms. Four of the arms are 12" in diameter, four are 16" in diameter, and all loading arms are 37 ft. high.

There were a number of logistical challenges and safety concerns that required close consideration and careful planning. However, thanks to our customer's marine department, our barge contractor, and the invaluable



field experience and safety training of our talented crew, the complexities of this project were all overcome. The eight marine loading arms were commissioned and delivered to the customer on time and without any safety incidents.

---

## JET FUEL DISPATCH TERMINAL IN ST. LUCIA

PB recently worked with a repeat customer to develop an Engineering, Procurement, and Construction (EPC) project designed to provide jet fuel to refuelers that provide jet fuel to commercial airlines at the St. Lucia, Hewanorra International Airport.

Three horizontal tanks, a fully equipped and semi-automated loading rack, as well as modular offices were

the main elements in the scope of work for this project.

The facility was designed to be operated by one person with the capability of loading two jet fuel refuelers simultaneously or to perform one refueler loading while a tank truck delivered jet fuel to the other storage tanks.

The jet fuel depot was also designed to withstand hurricane winds up to 180mph and flooding for up to 4' of water.

PB is proud that the international crew always has safety as a top priority, and this project was safely executed.

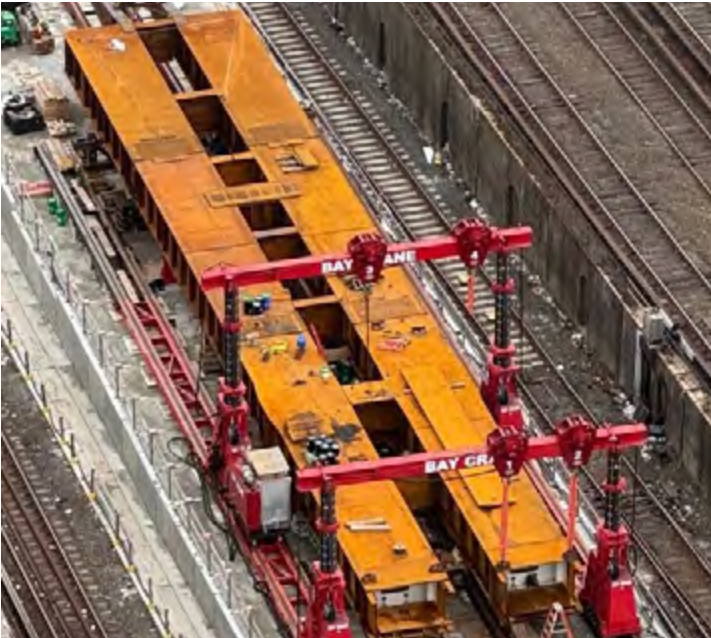




---

## BUILDING BIG GIRDERS FOR A PARTNER FABRICATOR

---



PB has completed fabrication, assembly, coatings, and delivery of 18 box girders for a partner fabricator in the Northeast. Fabrication was performed at both our Adamo and Port facilities with progressive assembly and coatings performed at our Port facility. These boxes range in size up to 120' long and weigh approximately 280,000 lbs. each.

The box girders were delivered to our industry partner and installed at the site.



---

## TWO DOZEN STAINLESS STEEL TANKS FABRICATED AND DELIVERED

PB recently completed twenty-four stainless steel shop-built tanks fabricated at both our Port and Adamo facilities. Each tank is 7' in diameter and 13' tall.



---

## PRECISION BUILD ACQUIRES TAMPA STEEL ERECTING COMPANY

Precision Build has acquired Tampa Steel Erecting Company (TSEC), a steel fabricator best known for building complex bridges and iconic structures such as the Disney Epcot Spaceship Earth geodesic dome as well as other notable projects including the erection of structural steel for the 39-story One Tampa City Center and the pipe trusses for Airside F at Tampa International Airport.

TSEC's expertise in steel bridges and tub girders is complementary to our business and will broaden our scope and capacity for fabricated steel products to better serve our customers.

TSEC had been owned by Bob Clark and his family since its

founding in 1945. Corey Yraguen, President & CEO of Precision Build Solutions said, "Our aim is to welcome the entire TSEC team into Precision Build, starting with Bob Clark. We are thrilled that Bob has agreed to remain as TSEC President to provide his experience and stewardship."

The current TSEC location, just six miles away from Precision Build's headquarters in Gibsonton, FL, encompasses 33 acres and boasts more than 220,000 sq. ft. of fabrication buildings.

The name, Tampa Steel Erecting Company, will be retained.



---

# PRECISION BUILD RECEIVES AISC AND FMA SAFETY HONORS FOR 2024

---



We are honored to share that PB has once again been recognized for our unwavering commitment to safety, earning the AISC Safety Award of Honor and the FMA Safety Award of Merit for both our fabrication and erection teams. These prestigious accolades are a testament to the diligence, integrity, and tireless efforts of every member of the PB family.

At PB, safety is a cornerstone of our culture. It reflects leadership's deep responsibility to protect our employees, and the collective promise our teams make to safeguard one another. These awards serve not only as recognition but as powerful reminders of the trust placed in us and the high standards we strive to uphold every day.



**SAFETY  
AWARD**

To our incredible teams: your steadfast dedication to creating a safe work environment defines excellence in our industry and ensures that everyone returns home safely. We extend our sincere gratitude to AISC and FMA for this recognition. Together, we will continue to lead with purpose and uphold our proud tradition of safety excellence.

---

## RADIAL ARM GATE NEARS COMPLETION

---

PB is proud to announce that our first Radial Arm Gate project is nearing completion with coatings substantially finished and barge shipment scheduled for July 2025. After fabrication, it received a high-performance, four coat vinyl paint system to ensure long-lasting protection and corrosion resistance.

The gate is an impressive structure measuring 30' in height, 60' in width, and weighing approximately 200,000 lbs. This milestone is a testament to our team's hard work, attention to quality, and commitment to safety. We look forward to loading the gate for its voyage up the Mississippi River and to seeing it in operation at the client's site.





---

# “VISIONS IN STEEL” EXHIBITION SHOWCASES PB EMPLOYEES

---

In January, the Center for Architecture & Design in Tampa featured an exhibit called “Visions in Steel” which showcased the artistry of steel fabricators and featured a number of PB employees.

Presented by the American Institute of Steel Construction

(AISC), the art exhibition celebrated the people who bring steel designs to life in Tampa Bay.

PB is proud to have been a part of this exhibition highlighting the talents of our dedicated steel fabricators and their ability to transform building designs.



---

## TURNKEY DELIVERY ON AN OVERSIZED TANK

PB has completed engineering, detailing, fabrication, testing, coatings, and shipment of a shop-built UL-142 stamped tank. This tank is 11.5' in diameter, 30' long, and required over-dimensional transport to our customer's site. This project was completed at our Adamo facility in Tampa, Florida and shipped to South Florida for commissioning and installation.



---

## 1.5M GALLON TANK FABRICATION AND PIPING FOR A TWO-BAY LOAD OUT FACILITY

---



PB constructed a 1.5M gallon tank and load out facility for Cooperative Farmers Elevator (CFE) in Hawarden, Iowa. The project consisted of a 92' diameter x 32' tall field erected tank with an internal bladder.

The design features a truck load in system and racks plumbed underground with HDPE dual contained pipe as well as 6" stainless steel pipe to a central manifold inside the building.

Additionally, the customer purchased five 30,000-gallon Precision Tank vinyl ester resin fiberglass tanks for storage of ATS and starters. Each tank features a pump and motor and is plumbed with 6" stainless steel pipe above ground and HDPE dual contained pipe underground to the central manifold inside the building.

A future load out line from the outside dike to the central manifold was installed for future product offerings. With future growth in mind, the customer designed the dike to accommodate additional tanks, but all foundation work was performed by others.

The customer designed this facility so their customers would benefit from speed & accuracy, as trucks can be loaded out simultaneously in both bays during business hours and after hours utilizing the facilities 24-7 capabilities.



---

## PRECISION BUILD INCREASES VISIBILITY AND MARKETS AT INDUSTRY EVENTS

---

### SUBSCRIBE TO SPARKS & REMARKS



To receive a print or digital version of our quarterly newsletter, visit <https://precisionbuild.com/newsletters/> and add your name to our distribution list on our Contact page.

#### ILTA

June 9 – 11, 2025

George R. Brown Convention Center—Houston, TX

#### API Storage Tank Conference & Expo

October 22 – 23, 2025

Sheraton Phoenix Downtown —Phoenix, AZ

#### NISTM

December 10 – 11, 2025

Woodlands Waterway Marriott—Woodlands, TX

#### SPARKS & REMARKS NEWSLETTER DISCLAIMER

Sparks & Remarks is an employee written newsletter for PB and affiliate company employees, clients, and for anyone with a general interest in the public works of Precision Build Solutions. The information contained in this newsletter is not intended to advise, advocate, endorse, champion, or promote any specific safety or construction related action on the part of the reader. The purpose of this newsletter is to help build pride of accomplishment, a sense of team, and an esprit de corps among our employees, our partners and our clients. In reading this newsletter you agree to enjoy it for entertainment and enlightenment only and expect nothing tangible or intangible as a result and will take no specific actions based solely on the information it contains.